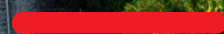




Cargo

This is sustainable.

Rail freight transport at DB Cargo



Climate and environmental protection are amongst the greatest challenges of our times. And it also applies to us in the transport and logistics sector: around a quarter of the greenhouse gas carbon dioxide in Europe is caused by traffic. Transport noise negatively impacts the environment and health. Unsustainable transport concepts endanger our prosperity. At the same time, however, logistics is a key driver of our economy. So we in trade and industry have a particular obligation to design transport concepts that are sustainable and environmentally friendly. The first step here involves using modes of transport sensibly and efficiently. To reach the climate goals set by the European Union we need a strong rail.

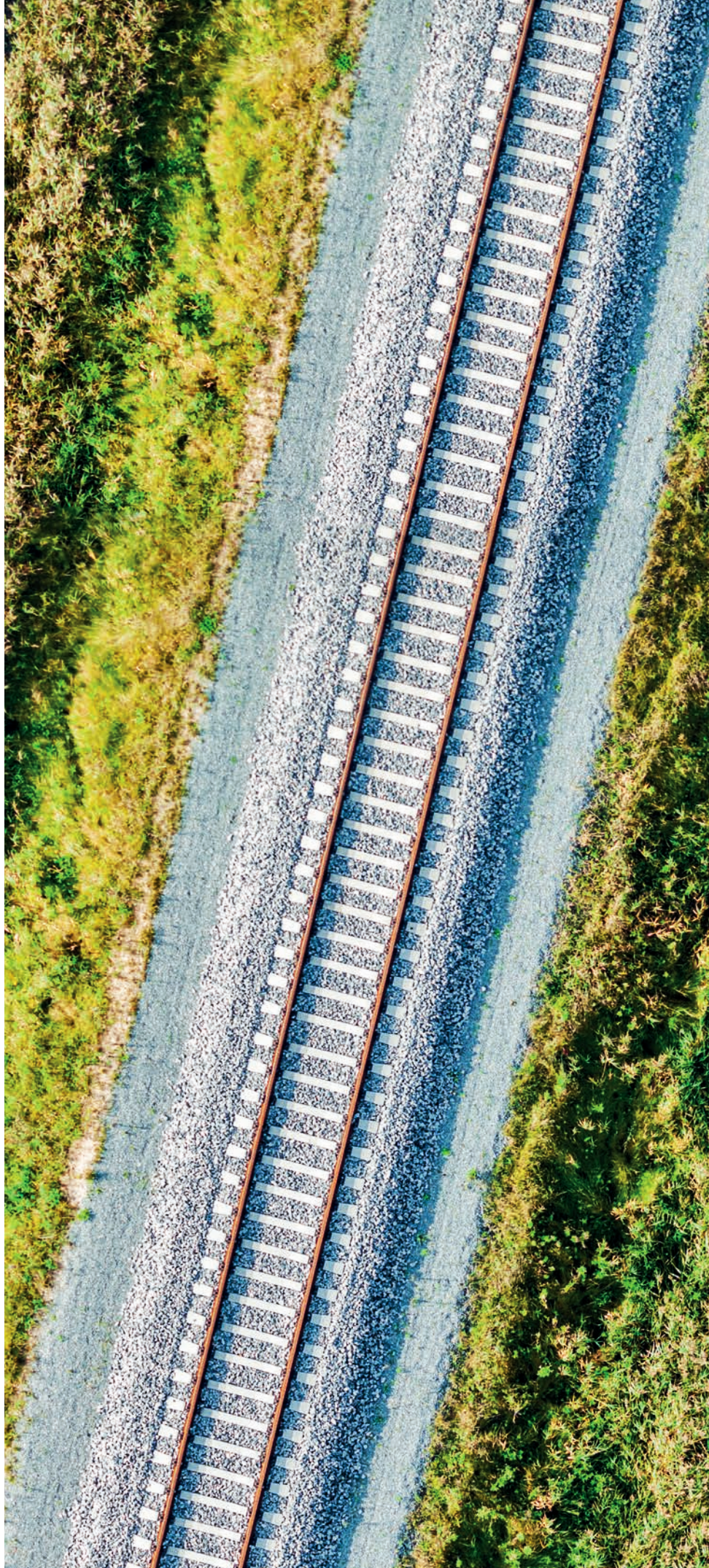
The green solution of choice: rail freight transport

Did you know that rail is one of the safest and most eco-friendly means of transport? A freight train consumes as little as a fifth of the energy required by a truck and saves more than 80% of the greenhouse gas emissions. This means that rail transport provides a basis for reducing greenhouse gas emissions by means of a modal shift.

But this is still not eco-friendly enough for us. And that is why DB has set itself the ambitious target of becoming climate neutral by 2040. We are working to switch our DB traction current mix in Germany exclusively to electricity from renewable sources, and we aim to achieve this by 2038.

How do we do this?

We achieve this, for example, by training our drivers in energy-efficient driving. Our driver assistance system LEADER (Locomotive Engineer Assist Display and Event Recorder) gives them additional on-board support, with recommendations on speeds depending on timetable and route profile.





Moreover, we are constantly modernising our fleet: We are focusing on the use of low-emission hybrid locomotives and energy-efficient dual-power and multi-system locomotives. The increased use of HVO biofuel will significantly reduce the need for conventional diesel in the coming years. The continuous improvement of our energy efficiency, especially of locomotives, has been documented by a certified energy management system in accordance with DIN EN ISO 50001 since 2025. Another step is the increased use of renewable power. In 2025, we switched all of our plants and locations in Germany to 100% renewable power. To reduce traffic noise, we are helping to ensure that our freight cars and electric locomotives in Germany are equipped with so-called "whisper brakes".

Do you want to become even more climate-friendly?

Then we have a solution: Climate+ offers you a more sustainable transport solution, in comparison to road transport based on your own requirements. We prioritise the avoidance of emissions through the use of 100% renewable power or alternative fuels. In addition, we offset remaining emissions that continue to be generated through meaningful climate protection projects. This makes us at DB Cargo your reliable partner when it comes to sustainable and eco-friendly transport.

With us you protect the environment

Simply drop us a line. Let us join forces to make your transport sustainable and protect our environment. For us, environmental protection is not just some kind of act. It is a mindset that shapes all of our actions. With our environmental brand **This is green.** and more than 150 concrete individual measures, we are making the green transformation visible.

deutschebahn.com/sustainability



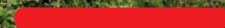


Cargo



Climate+

Go with us
one step further



Climate+

Your choice for the climate



Planning your transport and making emissions transparent

Do you want to transport your goods in a sustainable and eco-friendly way? Are the environmental benefits of rail not enough for you? We have a solution for this: with Climate+ you can transport your goods CO₂e neutral.¹⁾ So how does that work? We determine the specific emissions of your transport for you with the aid of the independent calculation tool EcoTransIT World from IVE mbH. Based on this, we create a sustainable transport concept for you.

Implementing a sustainable transport concept and protecting the climate

Avoiding emissions is the number one priority when creating a sustainable transport concept. In concrete terms, this means that we use 100% renewable power on electrified routes in Germany and other countries. On diesel routes in Germany, Italy and the UK we reduce emissions by around 90% with the biofuel HVO ("hydrotreated vegetable oils") compared to fossil diesel. We offset remaining emissions by supporting climate protection projects according to CDM and Gold Standard around the world. You decide the routes on which you want to use Climate+.

Receive your environmental certificate

For Climate+, we ensure compliance with high quality standards and certify the amount of greenhouse gas emissions avoided or offset. The certificate shows transparently which emissions have been saved and how. The emissions avoided can then be offset against your carbon footprint. This enables you to credibly in competition and towards your customers.

This is green.

no. 01 Full energy.
Avoid CO₂.
100% renewable power.

This is green.

no. 32 Invest sustainably.
Support projects.
Climate protection.

This is green.

no. 164 Climate-friendly.
Fully fueled.
Biofuel HVO 100.

1) DB Cargo ensures CO₂e-neutrality by using 100% renewable energy, hydrotreated vegetable oil (HVO) and/or compensation schemes, depending on routes and requirements. DB Cargo offsets indirect and/or remaining emissions by participating in recognised climate protection projects in accordance with VCS, Social Carbon / CCB and/or Gold-Standard.



Acknowledgements

Contact:

DB Cargo AG
Rheinstraße 2
55116 Mainz



dbcargo.com



dbcargo.com/newsletter

Follow and inform yourself on our social media channels.

Photography credits: Getty Images/Matt Champlin;
Shutterstock.com/Miks Mihails Ignats,
DB AG/Michael Neuhaus

Subject to change without notice
No liability for errors or omissions
Last modified: November 2025